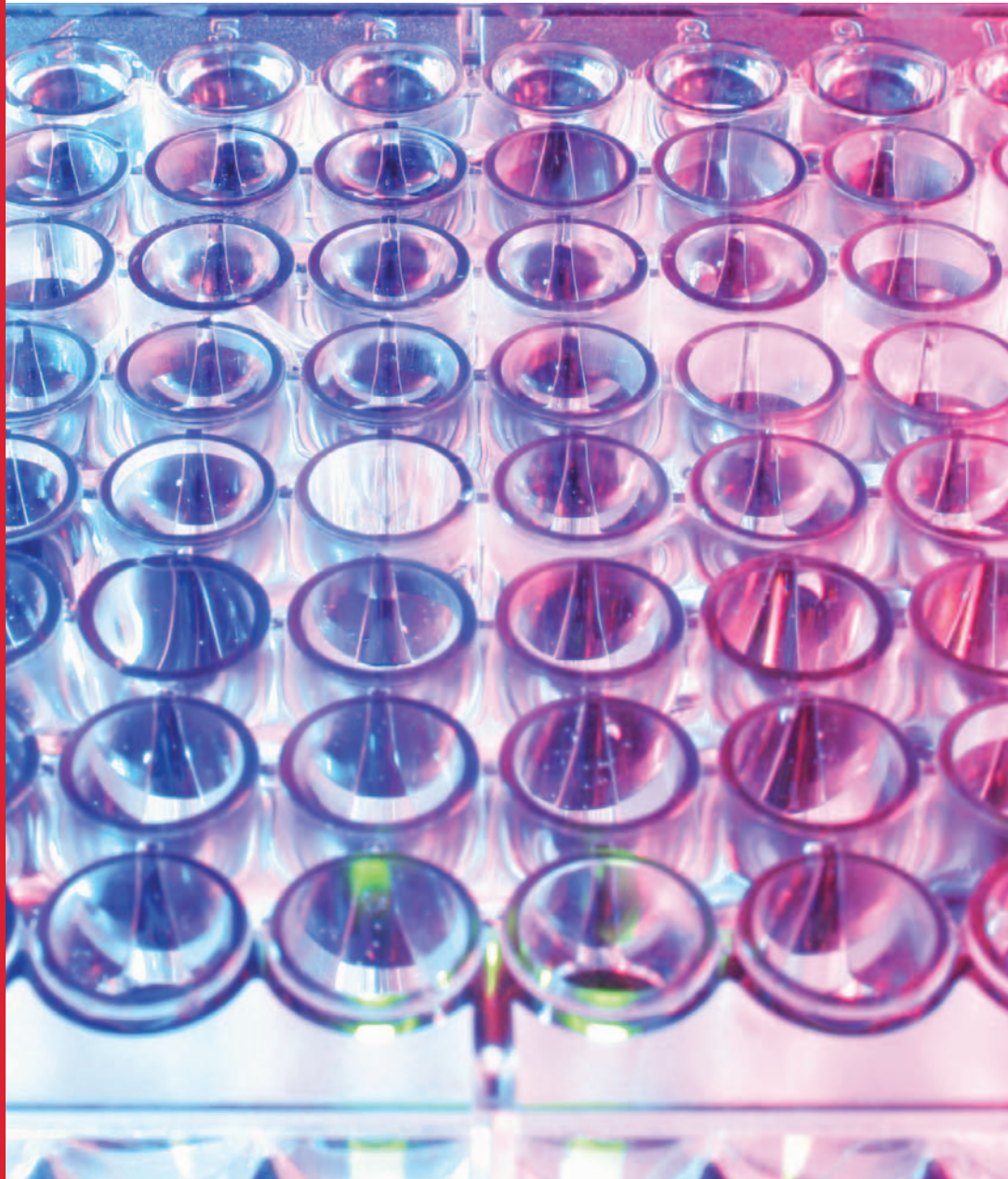


FLOW CYTOMETRY

MoFlo™ | CyCLONE™



Increase productivity with high-speed, high-precision cell deposition into any multiwell plate or slide format you choose.

The CyCLONE Automated Cloner enables accurate cell deposition with the MoFlo High-Performance Cell Sorter.

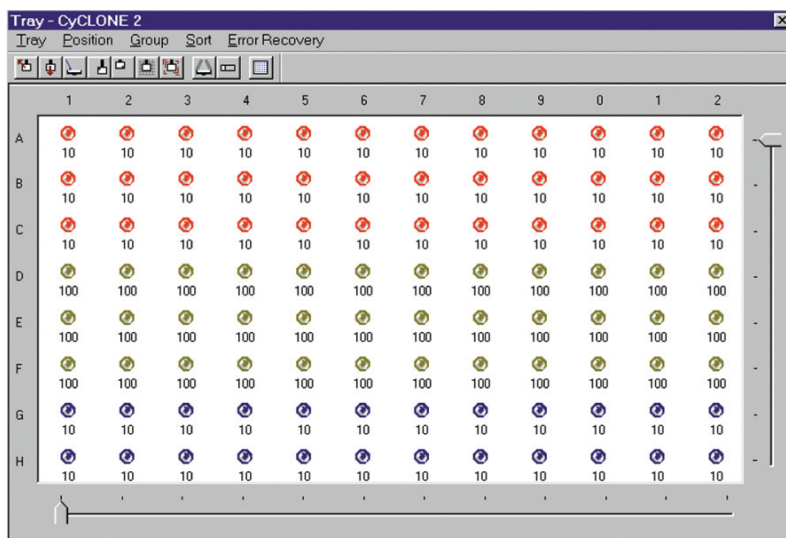
CyCLONE's precise positioning allows single cells to be sorted into standard or specialized trays, or onto slides for your customized sort profiles.

CyCLONE's automated drop-delay calibration feature allows for fast and accurate sort setup and monitoring.

MoFlo CyCLONE

CyCLONE Automated Cloner sets the bar for performance, versatility and speed. From a one percent starting target population, CyCLONE can execute single-cell deposition into a 96-well plate in less than 50 seconds with 99.9 percent recovery. CyCLONE also provides a 1536-well plate format, in addition to specialized formats such as Terasaki and custom slide deposition.

- Recovery greater than 99.9 percent.
- Single-cell accuracy is assured with a proprietary algorithm for “one-and-one only” cell deposition.
- Deposition positioning accuracy of $\pm 43.541 \mu\text{m}$ on the y-axis and $\pm 126.27 \mu\text{m}$ the x-axis.
- Well-to-well position speed of 3.9 inches per second.
- Automated drop-delay calibration allows easy setup and monitoring.
- In-system monitoring and control ensures long-term performance.
- The retractable arm makes the switch between cloning and traditional tube sorting fast and easy.



Summit software user interface for the CyCLONE Automated Cloner has the capability to customize sort setups for multiwell plate or slide deposition.

CyCLONE Automated Cloner Specifications

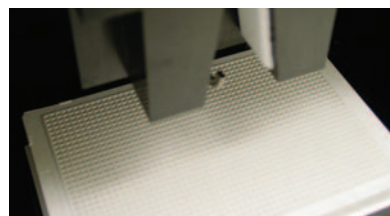
Supported Receptacle	Standard multiwell plate formats including 72, 96, 384, 1536; Terasaki plates; custom formats on standard microscope slides
Maximum Density of Discrete Droplet Deposition	1818 rows by 952 columns for a total of 1.73 million objects on an Omni tray (800 mm x 120 mm)
Cell Deposition Accuracy	Standard deviation of $\pm 126.27 \mu\text{m}$ on the x-axis; $\pm 43.541 \mu\text{m}$ on the y-axis
Maximum Well-to-Well Speed	3.9 inches per second



Standard 96-well plate



Specialized Terasaki plate



Standard 1536-well plate



Corporate Headquarters
Denmark
Tel +45 44 85 95 00

www.dako.com

Distributors in more than 50 countries

Australia
+61 2 9316 4633

Austria
+43 1 408 4334 50

Belgium
+32 016 38 72 20

Canada
+1 905 858 8510

Czech Republic
+420 541 42 37 10

Denmark
+45 44 85 97 56

France
+33 1 30 50 00 50

Germany
+49 40 69 69 470

Ireland
+353 91 768150

Italy
+39 02 58 078 1

Japan
+81 75 211 3655

The Netherlands
+31 20 42 11 100

Norway
+47 23 14 05 40

Poland
+48 58-661 1879

Spain
+34 93 499 05 06

Sweden
+46 08 556 20 600

Switzerland
+41 41 760 11 66

United Kingdom
+44 (0)1 353 66 99 11

United States of America
+1 805 566 6655

For Research Use Only. Not for use in diagnostic procedures.